



Race instructions

Omnium Champlain 2010

Presented by



DUFOUR

YACHTS

The Ultimate Sailing Pleasure

Our sponsors are:



1890 Marie Victorin
St-Bruno, Québec
J3V-6B9
(450) 653-6636
info@larsensails.net



Raymarine®



Promotions **Diane Lamb** ARTICLES PROMOTIONNELS
Jean-Luc Laurin
Représentant
349 Luce-Village
Joliette QC
J6E 7P1
Tél: (450) 759-7207
Fax: (450) 759-4603

Thomas Pillsworth, fine wine import

Thanks to:



1 Racing instructions

1.1 Rules

All participants must follow instructions as described in the "International Yacht Racing Rules '2009-2012". These racing instructions will stand except as amended or altered by the Sailing Instructions.

1.2 Registration

All boats registered in the Omnium Champlain must comply with the safety rules in effect in the United States. All participants must receive their handicap rating from the Omnium Champlain handicapping committee before the start of the race. The listing of the boats and their handicap will be made available for on-site reference.

1.3 Notice to participants

All instructions described below serve as general guidelines for the race.

1.4 Special instructions

Race instructions are described below. All changes or exceptions will be announced before each race at the committee boat and/or at the Skipper's meeting.

1.5 Number and schedule of races

See section 2: "Starting times".

1.6 Race courses

The race courses are described in Section 3: "Description of Racing Courses". The race course number will be displayed on the committee boat before every race. Racing and cruising.

For instance: 2 means race course # 2 as described in the section: "Description of Racing Courses".

1.7 Racing buoys

Racing buoys can be aids to navigation and/or Omnium Champlain inflatable buoys.

1.8 Starting procedures

5 minutes	Class flag up / 1 sound	Warning signal
4 minutes	Flag P up / 1 sound	Preparatory signal
1minute	Flag P down / 1 long sound	One-minute
0	Class flag down / Sound	Start signal.

1.9 Start Line

The starting line will be located between the committee boat (RC flag) and a racing buoy.

1.10 Recalls

Recalls of individual boats will be signaled by the X flag and a horn blast. The boat number will be called on Channel 72. Compliance with a recall signal is the responsibility of the boat skipper.

General recalls will be signaled by the first substitute flag and two horn blasts. New starting signals will be initiated one minute after the first substitute flag is lowered.

A class that has been recalled shall restart after the remaining classes have had their start.

1.11 Change of course

No course changes will be made after the start unless the race must be shortened (as described in 1.12.) for white sail (Class C D and E)

For racing Class A and B, The committee may change race course by raising the "C" flag followed by two horn blasts

1.12 Shortened race

The racing committee may shorten a race by raising the "S" flag followed by two horn blasts. The leading boat will be notified of the change. This will be done as the leading boat closes in on a marker or racing buoy on the course. The committee boat and this existing buoy or marker will serve as the finish line.

1.13 Finish Line

The finish line will be located between the committee boat (RC flag) and a racing buoy or marker, or between a flag held by a member of the racing committee and a racing buoy or marker.

1.14 Time Limit

Saturday, The time limit for all races is two (2) hours for the arrival of the first boat for each class, with a maximum time of 3 hours to finish the race.

Sunday (long distance race), The time limit for all races is four (4) hours for the arrival of the first boat for each class, with a maximum of 6 hours to finish the race.

The race committee will remain in place until all boats cross the finish line or limit time is over. The boats that will not finish the race within the time limit, will not be scored (DNF).

1.15 Classes

The five (5) classes are the following according to the PHRF Rating:

Racing Class

Class A:	90 or –
Class B:	91 or +

Cruising Class

Class C:	140 or –
Class D:	141 or +

First Time Racers

Class E: all

1.16 Scoring System

The low point scoring system described in the *2009-2012 International Yacht Racing Rules* is being used. Three races are required to qualify, except when a race has been cancelled by the race committee. There will be an announcement of race results in real time at the end of each day.

1.17 Protests

In order to be admissible, all protests must be lodged in conformity with chapter 5, Section A of the ISAF. A protest must be submitted in writing using the prescribed CYA form, during the 30-minute period between signals given at 17:00 and 17:30 on Saturday September 5th & between signals given at 15:00 and 15:30 on Sunday September 6th. Each period covers the race(s) of the day.

No protest will be accepted before or after these periods. Once the protest is filed, the concerned parties will be informed of the place and time of the hearing. A 50\$ deposit is required for each protest filed. The racer wishing to file a protest must inform the Race Committee upon arrival at the finish line. A protest which is not submitted on the prescribed form, which does not clearly describe the circumstances and which does not indicate which rule(s) were contravened will be automatically rejected.

1.18 Safety

A boat that does not complete a race must inform the committee boat. The skipper of a boat has the entire responsibility of his crew and his boat. He also has the responsibility to decide whether he will participate in a race or not. All boats must carry equipment required by the US Coast Guard and any applicable Federal, State, and local authorities.

1.19 Skipper's Meeting

There will be only one official meeting. It will take place on Saturday September 4th at 08h00 at the Plattsburgh Boat Basin, Naked Turtle

1.20 Sailing Number

If you don't have sail number, a number will be assign to you.

1.21 Use of engine before the start

The engine must be switched off at the start of the boat's class Preparatory Signal (5 min. before start) is hoisted

1.22 Use of spinnaker before the start of the race (for racing class A & B)

A boat must not cross the starting line while flying a spinnaker, unless the start signal has been given more than 5 minutes earlier. The hoisting of the spinnaker, with or without a sleeve, must not begin before boat reaches the starting line, unless the above-mentioned time limit has expired.

1.23 Penalty regarding Chapter 2

The one turn rule applies when a boat touches a racing buoy. The two-turns rule described in the *International Racing Rules 2009-2012* applies at all time.

1.24 Radio Communication

The Race Committee may use the VHF radio to communicate with the racers. Channel 72 will be used. Racers must not use VHF channel 72 except for urgent communications, for dropping out of the race or to respond to a Race Committee request. The Race Committee may disqualify any racer who uses this channel for other purposes.

1.25 Race results

There will be an announcement of race results at the end of each racing day. Note that these results could be provisional.

2. Schedule and starting procedures

2.1 Classes and flags

All racing boats will be identified with a coloured flag attached to their backstay.

Racing Classes

Class A	White flag
Class B	Blue flag

Cruising Classes

Class C	Black flag
Class D	Green flag

First Time racers

Class E	Orange flag
---------	-------------

In addition, in case of protest, a red flag should be attached to the backstay.

2.2 Starting Procedures

5 min attention Signal: class flag and horn

4 min preparatory signal: P flag up and horn

1 min before start: P flag down and long horn

0 Start: horn

General recall signal: Blue flag with yellow triangle

Individual recall signal: X (White flag with blue cross)

Shortened race signal: S (White flag with blue rectangle)

Delayed start signal: Red and white stripes.*

General recall .: Triangle yellow on blue

Individual recall: X (blue cross on white)

Shorten course: S (blue square on white)

Course change: C (blue white red line)

Postpone Start : AP flag (vertical red and white stripe)

* A new sequence will begin one minute after this flag down.

2.3 Starting Sequences Saturday September 4th 2010:

Race 1 (2 COURSE)

Course 1

Attention Signal Class A: 09h55 Preparation Signal Class A:09h56
Start Signal Class A: 10h00

Attention Signal Class B: 10h00 Preparation Signal Class B: 10h01
Start Signal Class B: 10h05

Course 2

Attention Signal Class C: 09h55 Preparation Signal Class C:09h56
Start Signal Class C: 10h00

Attention Signal Class D: 10h00 Preparation Signal Class D: 10h01
Start Signal Class D: 10h05

Attention Signal Class E: 10h05 Preparation Signal Class E: 10h06
Start Signal Class B: 10h10

Race 2 (2 COURSE)

Course 1

Attention Signal Class A: 13h55 Preparation Signal Class A:13h56
Start Signal Class A: 14h00

Attention Signal Class B: 14h00 Preparation Signal Class B: 14h01
Start Signal Class B: 10h05

Course 2

Attention Signal Class C: 13h55 Preparation Signal Class C:13h56
Start Signal Class C: 14h00

Attention Signal Class D: 14h00 Preparation Signal Class D: 14h01
Start Signal Class D: 14h05

Attention Signal Class E: 14h05 Preparation Signal Class E: 14h06
Start Signal Class B: 14h10

Sunday September 5th 2010:

Course 1

Attention Signal Class A&B: 09h55 Preparation Signal Class A&B:09h56
Start Signal Class A&B: 10h00

Course 2

Attention Signal Class CD&E: 10h10 Preparation Signal Class CD&E : 10h11
Start Signal Class CD&E : 10h15

3. Location

Races will be held in the Plattsburgh area. The first time racers (E and F) will have different courses in order not to be in conflict with classes A, B, C and D.

3.1 Courses

3.11 Marks, description and location of marks

Mark	Description	Location
"BWR"	Breakwater	East of Plattsburgh Boat Basin
"C"	Red cylinder N 44 41' 316" W 73 24' 950"	Center of Cumberland Bay
CI"	Crab Island	
"CPI"	Carlton's Prize	
"E"	White cylinder	Southern tip of Cumberland
Head	N 44° 41.434' W 73° 23.921'	
"GC1"	Green Can	Cumberland Bay
"GC3"	Green Can	West of Valcour Island
"GI"	Garden Island	South of Valcour Island
"N"	Red mark N 44° 42.793' W 73° 25.583'	Northern Cumberland Bay
"O"	Drop mark (yellow)	Drop mark with location de-
pending		on course selected
"PI"	Providence Island	
"RC"	Race Committee boat	
"RN2"	Red Nun	Valcour Shoal
"RN4"	Red Nun	North of Ausable Point
"RN24"	Red Nun	North of Crab Island
"RN26"	Red Nun	Spoon Bay, east of Valcour Is-
land		
"RN28"	Red Nun	East of Garden Island
"S"	Red cylinder	Southern Cumberland Bay,
North of Crab Island		N 44°40.276' W 73° 24.752'

3.12 Notes about marks

- A.** (s) denotes that the mark is rounded to starboard; otherwise the mark is rounded to port.
- B.** The first mark of each course identifies the starting line (start).
- C.** Description denotes the marks in the order they are to be taken. The last denotation is the finishing mark.
- D.** Course may be shortened at any mark described on the course .

3.13 Courses on Race Committee Boat

The courses will be on the race Committee Boat before each race depending on weather conditions and wind directions.

Classes A, B

Course 1: 3 windward/leeward loop

Course 2: 2 windward/leeward loop

Classes C, D et E :

Triangle Modified Olympic triangle:
Triangle + windward/leeward loop
(designated by 3 yellow mark)

Dimanche

Classes A, B

Course 3: GC1 CI RN2(s) GC3 RN4 RN28 RN26 RN24 S N GC1

Course 4: N S(s) PI CPI PI(s) S N

Course 5: S N CI RN2(s) GC3 RN4 RN28 RN26 RN24 S

Course 6: S GC1 RN24(s) PI CPI PI(s) RN24 S GC1

Course 7: 4X windward/leeward loop

Classes C, D et E

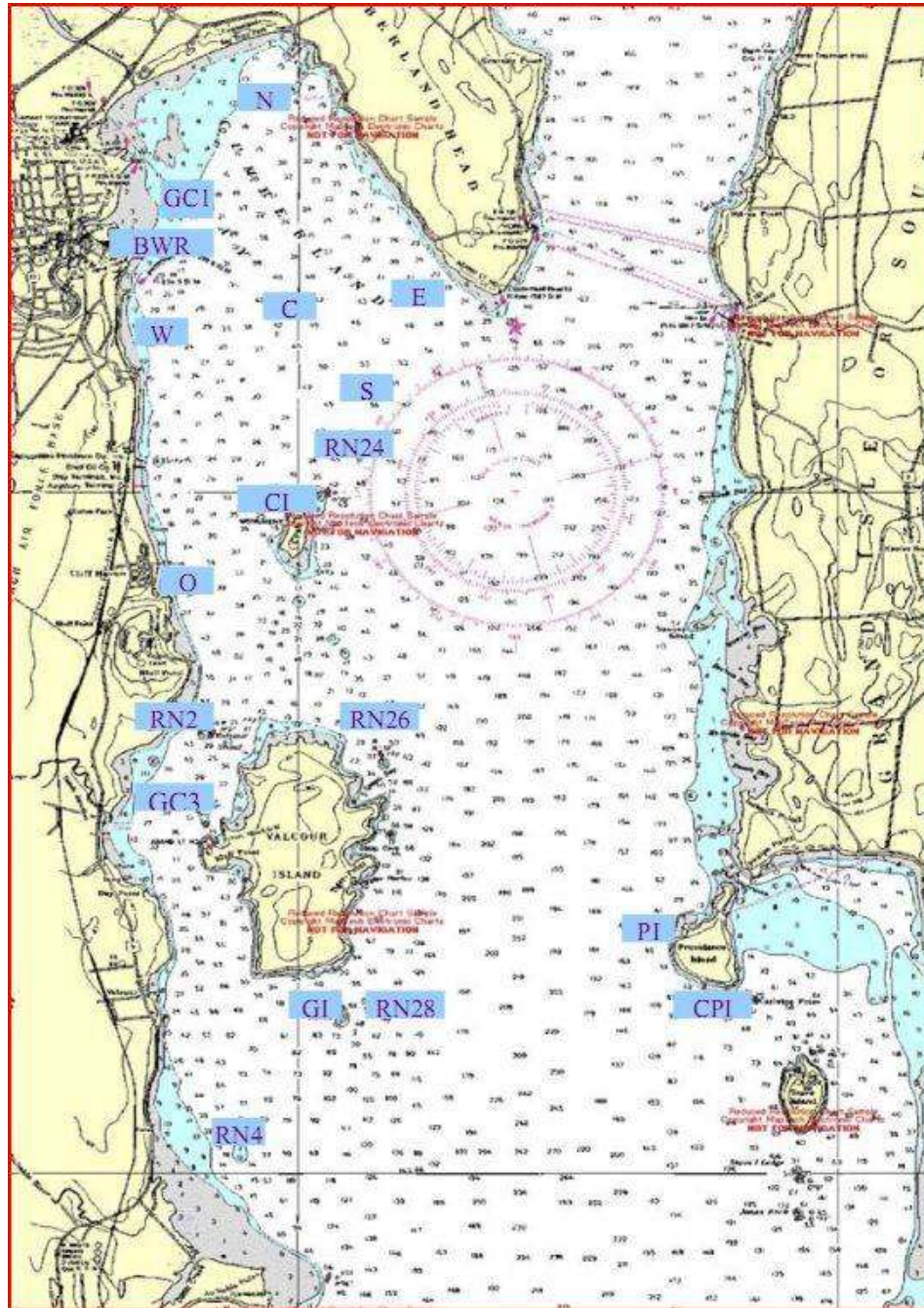
Course 8: GC1 CI RN2(s) GC3 CI RN24 S N GC1

Course 9: N S(s) Y E N (see note)

Course 10: S N CI RN2(s) GC3 CI RN24 S

Course 11 S GC1 Y RN24 S GC1 (see note)

Note: mark (Y) close to the VT shore between Crab and Valcour





Marina Gagnon, the winning team

Regarding sales, brokerage or boat maintenance, our crew is ready to welcome you and give you the best service in the industry.

MARINA GAGNON employs up to 50 people during the high season. The staff is a young and dynamic team whose main objective is customer satisfaction. The team at MARINA GAGNON is always looking for the best: innovation, improvement and refinement are its trademark.

MARINA GAGNON has become one of the largest marinas in Quebec. Its success is explained by the importance it has always granted to customer service. She has always been able to anticipate and meet the needs of its customers and intends to continue in this way.

**50, 62e rue
Saint-Paul-de-l'île-aux-Noix,
(Québec) J0J-1G0
(450) 291.3336, (514) 875.8080,
Fax: (450) 291-3309
www.marinagagnon.com
info@marinagagnon.com**

